

Specifications

Engine

Maker/Model		KIRLOSKAR 4R1040NA	
Rated flywheel horse power	SAE	J1995 (Gross)	76 HP (56.7 kW) @ 2200 rpm
		J1349 (Net)	73 HP (54.4 kW) @ 2200 rpm
		6271/1 (Gross)	77 PS (56.7 kW) @ 2200 rpm
		6271/1 (Net)	74 PS (54.4 kW) @ 2000 rpm
Max Torque		29.5 kgf.m (214 lbf.ft) @ 1320 rpm	

Hydraulic System

Main pump

Type	Two variable displacement piston pumps
Max. flow	2 x 75.6 lpm
Sub-pump for pilot circuit	Gear pump
Cross-sensing & fuel saving pump system	

Hydraulic motors

Travel	Two speed axial piston motor with counter balance valve and pairing brake
Swing	Axial piston motor with automatic brake

Relief valve settings

Implement circuits	280 kgf/cm ²
Travel	280 kgf/cm ²
Swing Circuit	210 kgf/cm ²
Pilot Circuit	35 kgf/cm ²
Service valve	Installed

Coolant & Lubricant Capacity

REFILLING	LITRE
Fuel tank	135
Engine coolant	10.8
Engine oil	11.5
Swing device-gear oil	1.5
Final drive (each)	1.2
Hydraulic system / Hydraulic tank	130 / 75

Drives & Brakes

Drive method	Fully hydrostatic type
Drive motor	Axial piston motor in-shoe design
Reduction system	Planetary reduction gear
Max. drawbar pull	5900 kgf (13,000 lbf)
Max. travel speed (high/low)	4.8 kmph (3 mph) / 3.0 kmph (1.9 mph)
Gradeability	35 Degree (70%)
Parking brake	Multi wet disc

Undercarriage

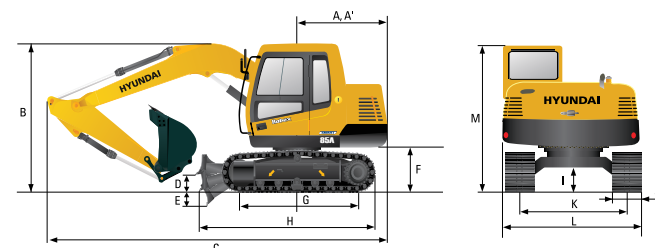
The X-leg type center frame is integrally welded with reinforced box-section track frames. The undercarriage includes lubricated rollers, idlers, track adjusters with shock absorbing spring and sprockets and track chain with triple grouser shoes.

Centre frame	X-leg type
Track frame	Pentagonal box type
No. of shoes on each side	38
No. of carrier rollers each side	1
No. of track rollers. each side	5

Swing System

Swing motor	Axial piston motor
Swing reduction	Planetary gear reduction
Swing bearing lubrication	Grease bathed
Swing brake	Multi wet disc
Swing speed	12.0 rpm

Swing System



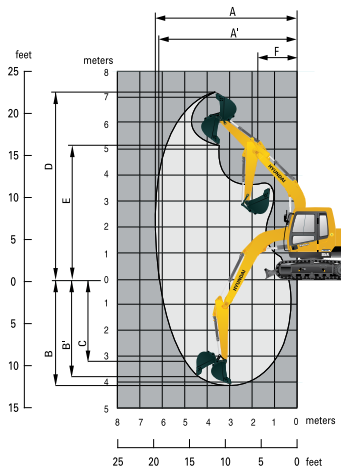
Dimensions

	mm
A Tail swing radius	1,750
A' Rear-end length	1,727
B Overall height of boom	2,750
C Overall length	6,080
D Ground clearance of blade up	400
E Depth of blade down	280
F Ground clearance of counterweight	760
G Tumbler distance	2,130
H Length of lower blade with dozer blade	3,340
I Min. ground clearance	360
J Track shoe width	450
K Track gauge	1,750
L Overall width of upperstructure	2,260
M Overall height of cabin	2,640
N Overall width	2,200
O Height of blade	460

Working Ranges

Boom length (std.)	*3,700mm
Arm length (std.)	1,670 mm

A	Maximum Digging Reach.	6,330mm
A'	Digging Reach on Ground.	6,190mm
B	Max Digging Depth	4,150mm
B'	Max- Digging Depth (8' level).	3,810mm
C	Vertical Digging Depth	3,200mm
D	Maximum Digging Height	7,260mm
E	Maximum Dumping Height.	5,170mm
F	Minimum Swing Radius.	1,750mm



HYUNDAI
CONSTRUCTION EQUIPMENT
INDIA

85A SMART

ENGINE RATED POWER
76HP(56.7KW) @2200rpm

OPERATING WEIGHT
8000 kg

BUCKET CAPACITY
0.35m³ GP/ 0.32GP/ 0.32HD/ 0.7 Salt

MOVING YOU FURTHER

HiMATE

- Alarm Notification
- Maintenance tracking
- Working information
- Machine live tracking
- Machine Health status



Hyundai Construction Equipment India Pvt. Ltd.

Factory Location

Plot No. A-2, M.I.D.C. Chakan, Phase II,
Village: Khalumbre, Taluka: Khed, Dist: Pune-410501
E mail: hyundai.care@theconnectionsindia.com
Tel.No.: 02135 301700 Fax No: 02135 301712
Toll Free No.: 1800 209 8600

Please Contact

Scan the QR code
with your phone
camera & visit
our website





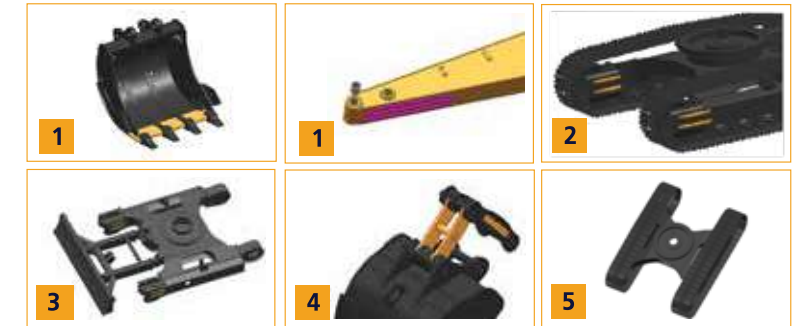
PRODUCTIVITY

1. Bigger bucket capacity
2. 10% increase in swing torque
3. Mode options to optimize power
4. Power control through CAPO system



STRUCTURE & DURABILITY

1. Reinforced front attachment
2. Reinforced idler area for high durability
3. Strong X-frame
4. Bucket link Reinforcement
5. High strength track chain



EFFICIENCY

1. Auto Kick down function **New!**
2. Newly design main control valve
3. Exclusive breaker mode
4. One touch idle & Auto deceleration function **New!**
5. Dual travel speed for faster response



SERVICEABILITY

1. Easy Serviceability
2. Clean fuel through fuel filler pump (optional)
3. Engine oil upto 500hrs and hydraulic oil upto 5000hrs
4. Machine warranty for 2 years / 5000 hrs*
5. Improved maintenance management
6. RMS (optional)



*Terms & Conditions applicable



OPERATOR CONVENIENCE

1. Biggest in class cabin & Soft controls
2. SMART digital colour display
3. Sun visor **New!**
4. Seat with 7 adjustments
5. Cabin Lights and music system **New!**
6. 12V power socket for mobile charging **New!**
7. Rubber cover for peddle **New!**



SAFETY

1. Holding valve prevents attachments from drifting
2. Anti-restart System to avoid accidental damage.
3. Auto warning during machine malfunction
4. Inbuilt self-diagnostic
5. Battery disconnect switch to protect electrical system
6. Side mirror for operator safety during operation

